

Chem-Impex International, Inc.

Tel: (630) 766-2112

E-mail: sales@chemimpex.com

Shipping and Correspondence:

935 Dillon Drive

Wood Dale, IL 60191

Fax: (630) 766-2218

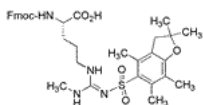
Web site: www.chemimpex.com

Manufacturing site:

825 Dillon Drive

Wood Dale, IL 60191

Product Specifications



Catalogue Number	16940
Product	<i>N</i>^α-Fmoc-<i>N</i>^ω-methyl-<i>N</i>^{ω'}-(2,2,4,6,7-Fmoc-L-Arg(Me,Pbf)-OH
CAS Number	1135616-49-7
Molecular Formula	C ₃₅ H ₄₂ N ₄ O ₇ S
Molecular Weight	662.8

Appearance	White to off-white or light yellowish powder
Analysis by Mass Spectra	Conforms to standard
¹H NMR	Conforms to structure
Chiral HPLC	≥ 99% (ee)
D-Enantiomer	≤ 1%
Purity by HPLC	≥ 99%
Storage	Store at 0 - 8 °C

For Laboratory Use Only