

Chem-Impex International, Inc.

Tel: (630) 766-2112

E-mail: sales@chemimpex.com

Shipping and Correspondence:

935 Dillon Drive

Wood Dale, IL 60191

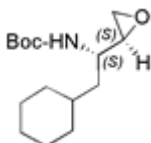
Fax: (630) 766-2218

Web site: www.chemimpex.com

Manufacturing site:

825 Dillon Drive

Wood Dale, IL 60191



Product Specifications

Catalogue Number	16875
Product	[(1S)-(1'-(S))-N-Boc-amino-2-cyclohexylethyl]
CAS Number	107202-62-0
Molecular Formula	C ₁₅ H ₂₇ NO ₃
Molecular Weight	269.38

Appearance	White powder
TLC System	Chloroform/Methanol/Acetic acid (90:8:2) Single Spot Chloroform/Methanol/Benzene/Water (8:8:8:1) Single Spot Visualized with : UV/Iodine
Optical Rotation	[α] _D ²⁵ = -15 ± 1 ° (C=1 in EtOH)
¹H NMR	Conforms to structure
LCMS	Conforms to structure
Purity by HPLC	≥ 99% (By ELSD)
Storage	Store at 0 - 8 °C

For Laboratory Use Only