

Chem-Impex International, Inc.

Tel: (630) 766-2112

E-mail: sales@chemimpex.com

Shipping and Correspondence:

935 Dillon Drive

Wood Dale, IL 60191

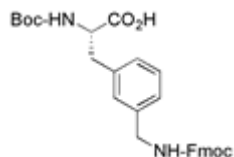
Fax: (630) 766-2218

Web site: www.chemimpex.com

Manufacturing site:

825 Dillon Drive

Wood Dale, IL 60191



Product Specifications

Catalogue Number	16858
Product	Boc-3-(Fmoc-aminomethyl)-L-phenylalanine
	Boc-L-Phe(3-CH ₂ NHFmoc)-OH
	Boc- <i>m</i> -(Fmoc-aminomethyl)-L-Phe-OH
CAS Number	959573-13-8
Molecular Formula	C ₃₀ H ₃₂ N ₂ O ₆
Molecular Weight	516.58
<hr/>	
Appearance	White powder
Optical Rotation	[α] _D ²⁵ = - 14 ± 2 ° (C=1 in DMF)
Analysis by Mass Spectra	Conforms to standard
¹H NMR	Conforms to structure
Purity by HPLC	≥ 98%
Storage	Store at 0-8 °C

For Laboratory Use Only