

Chem-Impex International, Inc.

Tel: (630) 766-2112

E-mail: sales@chemimpex.com

Shipping and Correspondence:

935 Dillon Drive

Wood Dale, IL 60191

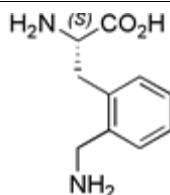
Fax: (630) 766-2218

Web site: www.chemimpex.com

Manufacturing site:

825 Dillon Drive

Wood Dale, IL 60191



Product Specifications

Catalogue Number	16855
Product	L-2-Aminomethylphenylalanine (2S)-2-Amino-3-[2-(aminomethyl)phenyl]propanoic acid
CAS Number	158149-99-6
Molecular Formula	C ₁₀ H ₁₄ N ₂ O ₂
Molecular Weight	194.23

Appearance	White to off-white powder
TLC System	Chloroform/Methanol/Acetic acid (90:8:2) Single spot Chloroform/Methanol/Benzene/Water (8:8:8:1) Single spot Visualized with UV/Iodine
Optical Rotation	$[\alpha]_D^{20} = +5.5 \pm 0.5^\circ$ (C=1 in 1N HCl)
Analysis by Mass Spectra	Conforms to standard
¹H NMR	Conforms to structure
Purity by HPLC	≥ 99%
Storage	Store at 0-8°C

For Laboratory Use Only