

Chem-Impex International, Inc.

Tel: (630) 766-2112

E-mail: sales@chemimpex.com

Shipping and Correspondence:

935 Dillon Drive

Wood Dale, IL 60191

Fax: (630) 766-2218

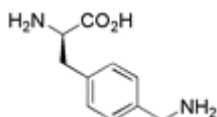
Web site: www.chemimpex.com

Manufacturing site:

825 Dillon Drive

Wood Dale, IL 60191

Product Specifications



Catalogue Number	16852
Product	D-4-Aminomethylphenylalanine D-Phe(4-CH ₂ NH ₂)-OH (2 <i>R</i>)-2-Amino-3-[4-(aminomethyl)phenyl]propanoic acid
CAS Number	1217662-97-9
Molecular Formula	C ₁₀ H ₁₄ N ₂ O ₂
Molecular Weight	194.23

Appearance	White powder
TLC System	Chloroform/Methanol/Acetic acid : 90/8/2 : Single spot Chloroform/Methanol/Benzene/Water : 8/8/8/1 : Single spot Visualized with : UV/Iodine
Optical Rotation	[α] _D ²⁵ = 8 ± 2 ° (C=1 in water)
¹H NMR	Conforms to structure
Chiral HPLC	≥ 99% (ee)
LCMS	Conforms to standard
L-Enantiomer	≤ 1%
Purity by HPLC	≥ 99%
Storage	Store at 0 - 8 °C

For Laboratory Use Only