

Chem-Impex International, Inc.

Tel: (630) 766-2112

E-mail: sales@chemimpex.com

Shipping and Correspondence:

935 Dillon Drive

Wood Dale, IL 60191

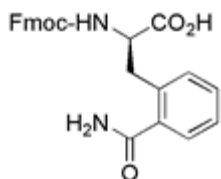
Fax: (630) 766-2218

Web site: www.chemimpex.com

Manufacturing site:

825 Dillon Drive

Wood Dale, IL 60191



Product Specifications

Catalogue Number	16785
Product	Fmoc-D-2-carbamoylphenylalanine
CAS Number	1217759-04-0
Molecular Formula	C ₂₅ H ₂₂ N ₂ O ₅
Molecular Weight	430.45

Appearance	White to off-white solid
Optical Rotation	[α] _D ²⁵ = + 62 ± 2° (C=1 in DMF)
Analysis by Mass Spectra	Conforms to standard
¹H NMR	Conforms to structure
Assay	≥ 98%
Chiral Purity	≥ 99% (ee)
Storage	Store at 0-8 °C

For Laboratory Use Only