

# Chem-Impex International, Inc.

---

**Tel:** (630) 766-2112

**E-mail:** sales@chemimpex.com

**Shipping and Correspondence:**

935 Dillon Drive

Wood Dale, IL 60191

**Fax:** (630) 766-2218

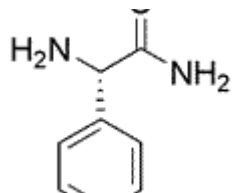
**Web site:** www.chemimpex.com

**Manufacturing site:**

825 Dillon Drive

Wood Dale, IL 60191

---



## Product Specifications

<b>Catalogue Number</b>	16622
<b>Product</b>	<b>(S)-(+)-2-Phenylglycine amide</b>
	L-(+)-Phenylglycine amide
<b>CAS Number</b>	6485-52-5
<b>Molecular Formula</b>	C <sub>8</sub> H <sub>10</sub> N <sub>2</sub> O
<b>Molecular Weight</b>	150.18

---

<b>Appearance</b>	White to off-white solid
<b>Melting Point</b>	198-206 °C
<b>Optical Rotation</b>	[α] <sub>D</sub> <sup>20</sup> = + 100 ± 2 ° (C=1 in H <sub>2</sub> O)
<b>Loss on Drying</b>	≤ 0.5%
<b>Purity</b>	≥ 99%
<b>Chiral Purity</b>	≥ 99.5% (ee)
<b>Storage</b>	Store at 0-8°C

**For Laboratory Use Only**