

Chem-Impex International, Inc.

Tel: (630) 766-2112

E-mail: sales@chemimpex.com

Shipping and Correspondence:

935 Dillon Drive

Wood Dale, IL 60191

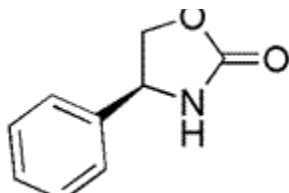
Fax: (630) 766-2218

Web site: www.chemimpex.com

Manufacturing site:

825 Dillon Drive

Wood Dale, IL 60191



Product Specifications

Catalogue Number	16615
Product	(S)-(+)-4-Phenyl-2-oxazolidinone (S)-(+)-4-Phenyloxazolidin-2-one L-(+)-4-(4S)-Phenyloxazolidinone
CAS Number	99395-88-7
Molecular Formula	C ₉ H ₉ NO ₂
Molecular Weight	163.17
Appearance	White or off-white crystalline powder
Water Content (Karl Fisher)	≤ 0.1%
Related Substances	(R) - (-) -4-Phenyl-2-Oxazolidinone : ≤ 0.5% Individual impurity: ≤ 0.5% Total impurity: ≤ 1.0%
Purity by HPLC	≥ 99%
Storage	Store at 0-8 °C

For Laboratory Use Only