

# Chem-Impex International, Inc.

---

**Tel:** (630) 766-2112

**E-mail:** sales@chemimpex.com

**Shipping and Correspondence:**

935 Dillon Drive

Wood Dale, IL 60191

**Fax:** (630) 766-2218

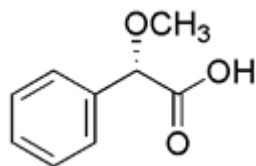
**Web site:** www.chemimpex.com

**Manufacturing site:**

825 Dillon Drive

Wood Dale, IL 60191

---



## Product Specifications

<b>Catalogue Number</b>	16614
<b>Product</b>	<b>(S)-(+)-Methoxyphenylacetic acid</b>
<b>CAS Number</b>	26164-26-1
<b>Molecular Formula</b>	C <sub>9</sub> H <sub>10</sub> O <sub>3</sub>
<b>Molecular Weight</b>	166.17

---

<b>Appearance</b>	White to off-white crystalline powder
<b>Melting Point</b>	64-70 °C
<b>Water Content (Karl Fisher)</b>	≤ 0.5%
<b>Optical Rotation</b>	[α] <sub>D</sub> <sup>20</sup> = + 158-161°
<b>Purity by HPLC</b>	≥ 99%
<b>Storage</b>	Store at 0-8°C

**For Laboratory Use Only**