

Chem-Impex International, Inc.

Tel: (630) 766-2112

E-mail: sales@chemimpex.com

Shipping and Correspondence:

935 Dillon Drive

Wood Dale, IL 60191

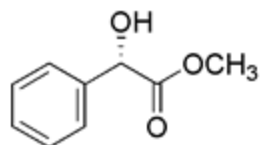
Fax: (630) 766-2218

Web site: www.chemimpex.com

Manufacturing site:

825 Dillon Drive

Wood Dale, IL 60191



Product Specifications

Catalogue Number	16613
Product	Methyl-(S)-(+)-mandelate (S)-(+)- α -Hydroxyphenylacetic acid methyl ester
CAS Number	21210-43-5
Molecular Formula	C ₉ H ₁₀ O ₃
Molecular Weight	166.17
<hr/>	
Appearance	White to off-white crystalline powder
Water Content (Karl Fisher)	≤ 0.5%
Optical Rotation	[α] _D ²⁰ = +142 ± 3° (C=1 in MeOH)
¹H NMR	Conforms to structure
Purity by HPLC	≥ 98%
Storage	Store at 0-8 °C

For Laboratory Use Only