

Chem-Impex International, Inc.

Tel: (630) 766-2112

E-mail: sales@chemimpex.com

Shipping and Correspondence:

935 Dillon Drive

Wood Dale, IL 60191

Fax: (630) 766-2218

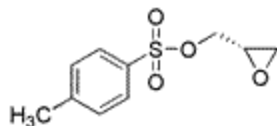
Web site: www.chemimpex.com

Manufacturing site:

825 Dillon Drive

Wood Dale, IL 60191

Product Specifications



Catalogue Number	16611
Product	(2S)-(+)-Glycidyl tosylate (S)-(+)-Oxirane-2-methanol <i>p</i> -toluenesulfonate (S)-(+)-Glycidyl <i>p</i> -toluenesulfonate
CAS Number	70987-78-9
Molecular Formula	C ₁₀ H ₁₂ O ₄ S
Molecular Weight	228.26
Appearance	White to off-white crystalline powder
Melting Point	45-48 °C
Optical Rotation	[α] _D ²⁰ = +18 ± 1° (C=2.75 in CHCl ₃)
Loss on Drying	≤ 0.5%
Chiral HPLC	≥ 99% (ee)
Purity by GC	≥ 99%
Storage	Store at 0-8 °C

For Laboratory Use Only