

Chem-Impex International, Inc.

Tel: (630) 766-2112

E-mail: sales@chemimpex.com

Shipping and Correspondence:

935 Dillon Drive

Wood Dale, IL 60191

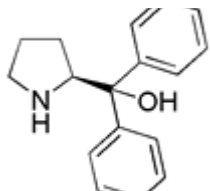
Fax: (630) 766-2218

Web site: www.chemimpex.com

Manufacturing site:

825 Dillon Drive

Wood Dale, IL 60191



Product Specifications

Catalogue Number	16607
Product	(S)-(-)-Diphenyl-2-pyrrolidinemethanol (S)-(-)-2-(Diphenylhydroxymethyl)pyrrolidine
CAS Number	112068-01-6
Molecular Formula	C ₁₇ H ₁₉ NO
Molecular Weight	253.34

Appearance	White crystalline powder
Melting Point	77 - 80 °C
Optical Rotation	[α] _D ²⁰ = -67 ± 3 ° (C=0.5% in CHCl ₃ , 25 °C)
Chiral HPLC	≥ 99% (ee)
Other Enantiomer	≤ 1%
Purity by HPLC	≥ 99%
Storage	Store at 0 - 8 °C

For Laboratory Use Only