

Chem-Impex International, Inc.

Tel: (630) 766-2112

E-mail: sales@chemimpex.com

Shipping and Correspondence:

935 Dillon Drive

Wood Dale, IL 60191

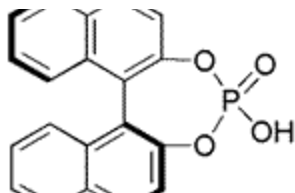
Fax: (630) 766-2218

Web site: www.chemimpex.com

Manufacturing site:

825 Dillon Drive

Wood Dale, IL 60191



Product Specifications

Catalogue Number	16602
Product	(S)-(+)-1,1'-Binaphthyl-2,2'-diyl hydrogen (S)-4-Hydroxydinaphtho[2,1-d:1',2'-f][1,3,2]dioxaphospepin-4-oxide (S)-(+)-1,1'-Binaphthalene-2,2'-diyl hydrogen phosphate
CAS Number	35193-64-7
Molecular Formula	C ₂₀ H ₁₃ O ₄ P
Molecular Weight	348.29
<hr/>	
Appearance	White powder
Melting Point	≥ 300 °C (dec.)
Loss on Drying	≤ 0.5%
Chiral HPLC	≥ 99% (ee)
Other Enantiomer	≤ 1.0%
Purity by HPLC	≥ 99%
Storage	Store at 0-8°C

For Laboratory Use Only