

Chem-Impex International, Inc.

Tel: (630) 766-2112

E-mail: sales@chemimpex.com

Shipping and Correspondence:

935 Dillon Drive

Wood Dale, IL 60191

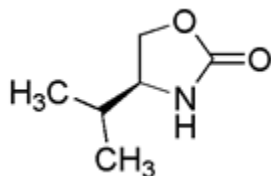
Fax: (630) 766-2218

Web site: www.chemimpex.com

Manufacturing site:

825 Dillon Drive

Wood Dale, IL 60191



Product Specifications

Catalogue Number 16591
Product **(S)-(-)-4-Isopropyl-2-oxazolidinone**

(4S)-4-Isopropyl-1,3-oxazolidin-2-one

CAS Number 17016-83-0

Molecular Formula C₆H₁₁NO₂

Molecular Weight 129.16

Appearance White crystalline powder

Melting Point 70-73 °C

Optical Rotation [α]_D²⁷ = -18 ± 1° (C=1 in CHCl₃)

Related Substances Total impurities: ≤ 1.0%

Purity by GC ≥ 99%

Chiral Purity ≥ 99% (ee)

Storage Store at 0-8 °C

For Laboratory Use Only