

# Chem-Impex International, Inc.

---

**Tel:** (630) 766-2112

**E-mail:** sales@chemimpex.com

**Shipping and Correspondence:**

935 Dillon Drive

Wood Dale, IL 60191

**Fax:** (630) 766-2218

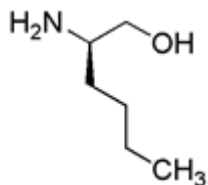
**Web site:** www.chemimpex.com

**Manufacturing site:**

825 Dillon Drive

Wood Dale, IL 60191

---



## Product Specifications

<b>Catalogue Number</b>	16568
<b>Product</b>	<b>D-Norleucinol</b> ( <i>R</i> )-2-Amino-1-hexanol
<b>CAS Number</b>	80696-28-2
<b>Molecular Formula</b>	C <sub>6</sub> H <sub>15</sub> NO
<b>Molecular Weight</b>	117.19

---

<b>Appearance</b>	White crystals to pale yellow solid
<b><sup>1</sup>H NMR</b>	Conforms to structure
<b>Assay</b>	≥ 95%
<b>Storage</b>	Store at 0 - 8 °C

**For Laboratory Use Only**