

Chem-Impex International, Inc.

Tel: (630) 766-2112

E-mail: sales@chemimpex.com

Shipping and Correspondence:

935 Dillon Drive

Wood Dale, IL 60191

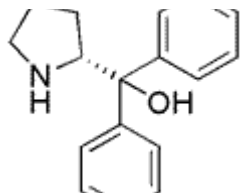
Fax: (630) 766-2218

Web site: www.chemimpex.com

Manufacturing site:

825 Dillon Drive

Wood Dale, IL 60191



Product Specifications

Catalogue Number	16549
Product	(R)-(+)-Diphenyl-2-pyrrolidinemethanol (R)-(+)-2-(Diphenylhydroxymethyl)pyrrolidine (R)-Diphenylprolinol
CAS Number	22348-32-9
Molecular Formula	C ₁₇ H ₁₉ NO
Molecular Weight	253.34
Appearance	White crystals
Melting Point	77 - 81 °C
Optical Rotation	[α] ²⁰ _D = 68 ± 2 ° (C=3 in Methanol)
Purity by GC	≥ 99%
Storage	Store at 0 - 8 °C

For Laboratory Use Only