

Chem-Impex International, Inc.

Tel: (630) 766-2112

E-mail: sales@chemimpex.com

Shipping and Correspondence:

935 Dillon Drive

Wood Dale, IL 60191

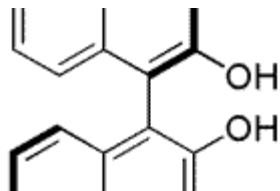
Fax: (630) 766-2218

Web site: www.chemimpex.com

Manufacturing site:

825 Dillon Drive

Wood Dale, IL 60191



Product Specifications

Catalogue Number	16532
Product	(R)-(+)-1,1'-Bi-2-naphthol (+)-2,2'-Dihydroxy-1,1'-binaphthyl (R)-(+)-1,1'-Dinaphthalene-2,2'-diol
CAS Number	18531-94-7
Molecular Formula	C ₂₀ H ₁₄ O ₂
Molecular Weight	286.32

Appearance	White crystal powder
Melting Point	208 - 211 °C
Optical Rotation	[α] _D ²² = 34 ± 0.5 ° (C=1, in THF)
Loss on Drying	≤ 0.5%
Chiral HPLC	≥ 99% (ee)
Other Enantiomer	≤ 1%
Purity by HPLC	≥ 99%
Storage	Store at 0 - 8 °C

For Laboratory Use Only