

# Chem-Impex International, Inc.

---

**Tel:** (630) 766-2112

**E-mail:** sales@chemimpex.com

**Shipping and Correspondence:**

935 Dillon Drive

Wood Dale, IL 60191

**Fax:** (630) 766-2218

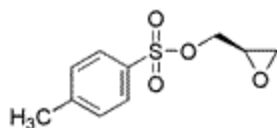
**Web site:** www.chemimpex.com

**Manufacturing site:**

825 Dillon Drive

Wood Dale, IL 60191

---



## Product Specifications

<b>Catalogue Number</b>	16518
<b>Product</b>	<b>(2R)-(-)-Glycidyl tosylate</b>  (R)-(-)-Oxirane-2-methanol p-toluenesulfonate  (R)-(-)-Glycidyl p-toluenesulfonate
<b>CAS Number</b>	113826-06-5
<b>Molecular Formula</b>	C <sub>10</sub> H <sub>12</sub> O <sub>4</sub> S
<b>Molecular Weight</b>	228.26
<b>Appearance</b>	White to off-white crystalline powder
<b>Melting Point</b>	45-48 °C
<b>Optical Rotation</b>	[α] <sub>D</sub> <sup>20</sup> = -18 ± 1° (C=2.75 in CHCl <sub>3</sub> )
<b>Loss on Drying</b>	≤ 0.5%
<b>Chiral HPLC</b>	≥ 99% (ee)
<b>Purity by GC</b>	≥ 99%
<b>Storage</b>	Store at 0-8 °C

---

**For Laboratory Use Only**