

Chem-Impex International, Inc.

Tel: (630) 766-2112

E-mail: sales@chemimpex.com

Shipping and Correspondence:

935 Dillon Drive

Wood Dale, IL 60191

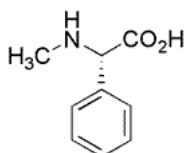
Fax: (630) 766-2218

Web site: www.chemimpex.com

Manufacturing site:

825 Dillon Drive

Wood Dale, IL 60191



Product Specifications

Catalogue Number	16408
Product	N-Methyl-L-phenylglycine hydrochloride N-Me-L-Phg-OH • HCl N-Me-Phg-OH • HCl
CAS Number	2611-88-3
Molecular Formula	C ₉ H ₁₁ NO ₂ • HCl
Molecular Weight	201.65

Appearance	Off-white powder
Optical Rotation	[α] _D ²⁰ = 75.3 ± 2 ° (C=0.5 in H ₂ O)
¹³C NMR	Conforms to structure
¹H NMR	Conforms to structure
Purity	≥ 98% (NMR)
Storage	Store at 0 - 8 °C

For Laboratory Use Only