

# Chem-Impex International, Inc.

---

**Tel:** (630) 766-2112

**E-mail:** sales@chemimpex.com

**Shipping and Correspondence:**

935 Dillon Drive

Wood Dale, IL 60191

**Fax:** (630) 766-2218

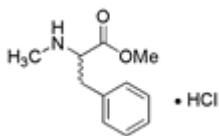
**Web site:** www.chemimpex.com

**Manufacturing site:**

825 Dillon Drive

Wood Dale, IL 60191

---



## Product Specifications

<b>Catalogue Number</b>	16406
<b>Product</b>	<b>N-Methyl-DL-phenylalanine methyl ester hydrochloride</b> N-Me-DL-Phe-OMe•HCl
<b>CAS Number</b>	16975-45-4
<b>Molecular Formula</b>	C <sub>11</sub> H <sub>15</sub> NO <sub>2</sub> •HCl
<b>Molecular Weight</b>	229.71
<hr/>	
<b>Appearance</b>	White powder
<b>Solubility</b>	Clear, colorless solution (50mg/mL in MeOH)
<b>Melting Point</b>	139-143° C
<b>Elemental Analysis (Theory)</b>	C: 57.50 ± 1%, H: 7.50 ± 1%, N: 6.50 ± 1%
<b>Water Content (Karl Fisher)</b>	≤ 0.5%
<b>TLC System</b>	n-butanol/acetic acid/water 4/2/2 Ethylacetate/pyridine/acetic acid/water 60/20/6/11 Chloroform/methanol/acetic acid/water: 45/13/1/2 Plate: silicagel 60 F <sub>254</sub> detected by: UV, ninhydrin, chlorine-tolidine
<b>Purity by TLC</b>	≥ 99%
<b>Storage</b>	Store at RT
<b>Additional Information</b>	Chloride content: < 16%

**For Laboratory Use Only**