

Chem-Impex International, Inc.

Tel: (630) 766-2112

E-mail: sales@chemimpex.com

Shipping and Correspondence:

935 Dillon Drive

Wood Dale, IL 60191

Fax: (630) 766-2218

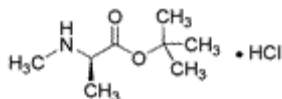
Web site: www.chemimpex.com

Manufacturing site:

825 Dillon Drive

Wood Dale, IL 60191

Product Specifications



Catalogue Number	16405
Product	<i>N</i>-Methyl-<i>D</i>-alanine <i>tert</i>-butyl ester hydrochloride N-Me-D-Ala-OtBu•HCl
CAS Number	405513-14-6
Molecular Formula	C ₈ H ₁₇ NO ₂ •HCl
Molecular Weight	195.69
<hr/>	
Appearance	White powder
¹³C NMR	Conforms to structure
¹H NMR	Conforms to structure
Purity	≥ 95% (NMR)
Storage	Store at 0-8°C

For Laboratory Use Only