

# Chem-Impex International, Inc.

---

**Tel:** (630) 766-2112

**E-mail:** sales@chemimpex.com

**Shipping and Correspondence:**

935 Dillon Drive

Wood Dale, IL 60191

**Fax:** (630) 766-2218

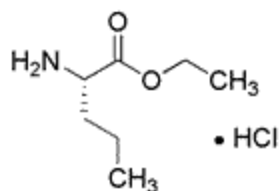
**Web site:** www.chemimpex.com

**Manufacturing site:**

825 Dillon Drive

Wood Dale, IL 60191

---



## Product Specifications

<b>Catalogue Number</b>	16306
<b>Product</b>	<b>L-Norvaline ethyl ester hydrochloride</b>
	L-Nva-OEt•HCl
	L-2-Aminovaleric acid ethyl ester hydrochloride
<b>CAS Number</b>	40918-51-2
<b>Molecular Formula</b>	C <sub>7</sub> H <sub>15</sub> NO <sub>2</sub> • HCl
<b>Molecular Weight</b>	181.66
<b>Appearance</b>	White powder
<b>Solubility</b>	Clear solution (0.3g in 2 mL H <sub>2</sub> O)
<b>Melting Point</b>	115-119 °C
<b>Water Content (Karl Fisher)</b>	≤ 1%
<b>Optical Rotation</b>	[α] <sub>D</sub> <sup>20</sup> = +8 ± 2 ° (C=1 in H <sub>2</sub> O)
<b>Infrared Spectrum</b>	Conforms to structure
<b>Analysis by Mass Spectra</b>	Conforms to structure
<b>Loss on Drying</b>	≤ 1% (55 °C, 2h)
<b><sup>1</sup>H NMR</b>	Conforms to structure
<b>Purity by HPLC</b>	≥ 99%
<b>Storage</b>	Store at 0-8°C

---

**For Laboratory Use Only**