

Chem-Impex International, Inc.

Tel: (630) 766-2112

E-mail: sales@chemimpex.com

Shipping and Correspondence:

935 Dillon Drive

Wood Dale, IL 60191

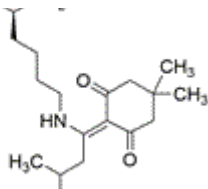
Fax: (630) 766-2218

Web site: www.chemimpex.com

Manufacturing site:

825 Dillon Drive

Wood Dale, IL 60191



Product Specifications

Catalogue Number	16193
Product	<i>N</i>^α-Fmoc-<i>N</i>^ε-1-(4,4-dimethyl-2,6-Fmoc-D-Lys(ivDde))-OH
CAS Number	1272755-33-5
Molecular Formula	C ₃₄ H ₄₂ N ₂ O ₆
Molecular Weight	574.7

Appearance	White to off-white powder
Optical Rotation	[α] _D ²⁰ = -7 to -11 ° (C=1 in CHCl ₃) [α] _D ²⁰ = 5 ± 2 ° (C=1 in DMF)
Purity by HPLC	≥ 98%
Storage	Store at 0 - 8 °C

For Laboratory Use Only