

Chem-Impex International, Inc.

Tel: (630) 766-2112

E-mail: sales@chemimpex.com

Shipping and Correspondence:

935 Dillon Drive

Wood Dale, IL 60191

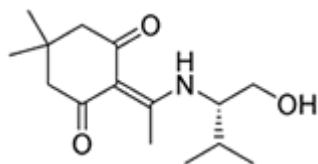
Fax: (630) 766-2218

Web site: www.chemimpex.com

Manufacturing site:

825 Dillon Drive

Wood Dale, IL 60191



Product Specifications

Catalogue Number	16166
Product	<i>N</i>^α-1-(4,4-dimethyl-2,6-dioxocyclohex-1-yl)-Dde-L-Valinol
CAS Number	1263046-20-3
Molecular Formula	C ₁₅ H ₂₅ NO ₃
Molecular Weight	267.4

Appearance	White crystalline powder
Melting Point	70 - 77 °C
Optical Rotation	[α] _D ²⁰ = -50 ± 1 ° (C=1 in MeOH)
Purity by HPLC	≥ 96%
Purity by TLC	≥ 98%
Storage	Store at 0 - 8 °C

For Laboratory Use Only