

Chem-Impex International, Inc.

Tel: (630) 766-2112

E-mail: sales@chemimpex.com

Shipping and Correspondence:

935 Dillon Drive

Wood Dale, IL 60191

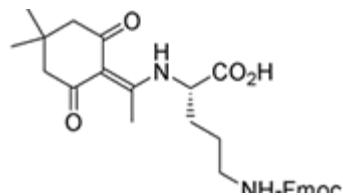
Fax: (630) 766-2218

Web site: www.chemimpex.com

Manufacturing site:

825 Dillon Drive

Wood Dale, IL 60191



Product Specifications

Catalogue Number	16163
Product	<i>N</i>^α-1-(4,4-dimethyl-2,6-dioxocyclohex-1-ylidene)ethyl-<i>N</i>^δ-Fmoc-L-ornithine Dde-L-Orn(Fmoc)-OH
CAS Number	1423017-87-1
Molecular Formula	C ₃₀ H ₃₄ N ₂ O ₆
Molecular Weight	518.6
<hr/>	
Appearance	White crystalline powder
Melting Point	138 - 143 °C
Optical Rotation	[α] _D ²⁰ = -11 ± 2° (C=1 in MeOH)
Assay by titration	≥ 99%
Purity by HPLC	≥ 99%
Purity by TLC	≥ 99%
Storage	Store at ≤ -15 °C

For Laboratory Use Only