

Chem-Impex International, Inc.

Tel: (630) 766-2112

E-mail: sales@chemimpex.com

Shipping and Correspondence:

935 Dillon Drive

Wood Dale, IL 60191

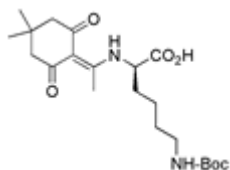
Fax: (630) 766-2218

Web site: www.chemimpex.com

Manufacturing site:

825 Dillon Drive

Wood Dale, IL 60191



Product Specifications

Catalogue Number	16157
Product	<i>N</i>^α-1-(4,4-dimethyl-2,6-dioxocyclohex-1-ylidene)ethyl-<i>N</i>^ε-Boc-D-lysine Dde-D-Lys(Boc)-OH
CAS Number	1272754-98-9
Molecular Formula	C ₂₁ H ₃₄ N ₂ O ₆
Molecular Weight	410.5
<hr/>	
Appearance	White crystalline powder
Melting Point	157-163 °C
Optical Rotation	[α] _D ²⁰ = +8.7 ± 1° (C=1 in MeOH)
Assay by titration	≥ 99%
Purity by HPLC	≥ 99%
Purity by TLC	≥ 98%
Storage	Store at 0-8 °C

For Laboratory Use Only