

Chem-Impex International, Inc.

Tel: (630) 766-2112

E-mail: sales@chemimpex.com

Shipping and Correspondence:

935 Dillon Drive

Wood Dale, IL 60191

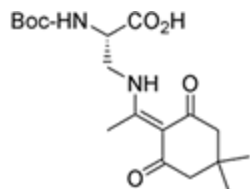
Fax: (630) 766-2218

Web site: www.chemimpex.com

Manufacturing site:

825 Dillon Drive

Wood Dale, IL 60191



Product Specifications

Catalogue Number	16132
Product	<i>N</i>^α-Boc-<i>N</i>^β-(4,4-dimethyl-2,6-dioxocyclohex-1-ylidene)ethyl-L-2,3-diaminopropionic acid Boc-L-Dap(Dde)-OH
CAS Number	1263045-09-5
Molecular Formula	C ₁₈ H ₂₈ N ₂ O ₆
Molecular Weight	368.5
<hr/>	
Appearance	White crystalline powder
Melting Point	143-149 °C
Optical Rotation	[α] _D ²⁰ = +32 ± 2° (C=1 in MeOH)
Assay by titration	≥ 98%
Purity by HPLC	≥ 98%
Purity by TLC	≥ 98%
Storage	Store at 0-8 °C

For Laboratory Use Only