

Chem-Impex International, Inc.

Tel: (630) 766-2112

E-mail: sales@chemimpex.com

Shipping and Correspondence:

935 Dillon Drive

Wood Dale, IL 60191

Fax: (630) 766-2218

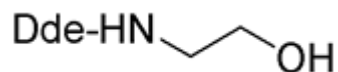
Web site: www.chemimpex.com

Manufacturing site:

825 Dillon Drive

Wood Dale, IL 60191

Product Specifications



Catalogue Number	16111
Product	2-(Dde-amino)ethanol 2-[(4,4-Dimethyl-2,6-dioxocyclohex-1-ylidene)ethyl-amino]ethanol Dde-Gly-ol
CAS Number	159821-68-8
Molecular Formula	C ₁₂ H ₁₉ NO ₃
Molecular Weight	225.3

Appearance	White crystalline powder
Melting Point	111 - 118 °C
Purity by HPLC	≥ 99%
Purity by TLC	≥ 99%
Storage	Store at 0 - 8 °C

For Laboratory Use Only