

# Chem-Impex International, Inc.

---

Tel: (630) 766-2112

E-mail: sales@chemimpex.com

Shipping and Correspondence:

935 Dillon Drive

Wood Dale, IL 60191

Fax: (630) 766-2218

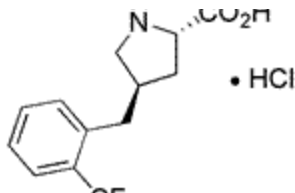
Web site: www.chemimpex.com

Manufacturing site:

825 Dillon Drive

Wood Dale, IL 60191

---



## Product Specifications

Catalogue Number	15933
Product	<b>(R)-<math>\gamma</math>-(2-Trifluoromethylbenzyl)-L-proline•HCl</b>
CAS Number	1049743-22-7
Molecular Formula	C <sub>13</sub> H <sub>14</sub> F <sub>3</sub> NO <sub>2</sub> •HCl
Molecular Weight	309.72

---

Appearance	White solid
TLC System	Chloroform/Methanol/Acetic acid (90:8:2) Single spot Chloroform/Methanol/Benzene/Water (8:8:8:1) Single spot Visualized with: UV/Iodine
Optical Rotation	[ $\alpha$ ] <sub>D</sub> <sup>25</sup> = -19 $\pm$ 3° (C=1 in MeOH)
Analysis by Mass Spectra	Conforms to standard
<sup>1</sup> H NMR	Conforms to structure
Purity by TLC	$\geq$ 98%
Storage	Store at 0-8 °C

**For Laboratory Use Only**