

Chem-Impex International, Inc.

Tel: (630) 766-2112

E-mail: sales@chemimpex.com

Shipping and Correspondence:

935 Dillon Drive

Wood Dale, IL 60191

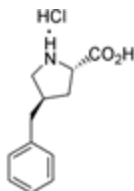
Fax: (630) 766-2218

Web site: www.chemimpex.com

Manufacturing site:

825 Dillon Drive

Wood Dale, IL 60191



Product Specifications

Catalogue Number	15891
Product	(R)-γ-Benzyl-L-proline•HCl
Molecular Formula	C ₁₂ H ₁₅ NO ₂ •HCl
Molecular Weight	241.72

Appearance	White powder
TLC System	Chloroform/Methanol/Acetic acid (90:8:2) Single spot Chloroform/Methanol/Benzene/Water (8:8:8:1) Single spot Visualized with Ninhydrin spray
Optical Rotation	[α] _D ²⁵ = -5 \pm 1° (C=1 in MeOH)
Purity by TLC	\geq 99%
Storage	Store at 0-8 °C

For Laboratory Use Only