

Chem-Impex International, Inc.

Tel: (630) 766-2112

E-mail: sales@chemimpex.com

Shipping and Correspondence:

935 Dillon Drive

Wood Dale, IL 60191

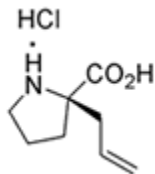
Fax: (630) 766-2218

Web site: www.chemimpex.com

Manufacturing site:

825 Dillon Drive

Wood Dale, IL 60191



Product Specifications

Catalogue Number	15883
Product	(R)-α-Allylproline•HCl
CAS Number	177206-69-8
Molecular Formula	C ₈ H ₁₃ NO ₂ •HCl
Molecular Weight	191.66
<hr/>	
Appearance	Yellow-white solid
Optical Rotation	[α] _D ²⁵ = -36 \pm 2° (C=1 in H ₂ O)
¹³C NMR	Conforms to structure
¹H NMR	Conforms to structure
Purity by HPLC	\geq 98%
Storage	Store at 0-8°C

For Laboratory Use Only