

Chem-Impex International, Inc.

Tel: (630) 766-2112

E-mail: sales@chemimpex.com

Shipping and Correspondence:

935 Dillon Drive

Wood Dale, IL 60191

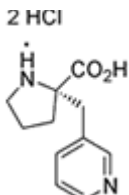
Fax: (630) 766-2218

Web site: www.chemimpex.com

Manufacturing site:

825 Dillon Drive

Wood Dale, IL 60191



Product Specifications

Catalogue Number	15877
Product	(S)-α-(3-Pyridinylmethyl)proline•2HCl
CAS Number	1217830-70-0
Molecular Formula	C ₁₁ H ₁₄ N ₂ O ₂ •2HCl
Molecular Weight	279.17

Appearance	Light yellowish brown powder
Melting Point	237-240 °C
Optical Rotation	[α] _D ²⁵ = -34 \pm 1° (C = 1 in H ₂ O)
Assay	\geq 99%
Storage	Store at 0-8 °C

For Laboratory Use Only