

Chem-Impex International, Inc.

Tel: (630) 766-2112

E-mail: sales@chemimpex.com

Shipping and Correspondence:

935 Dillon Drive

Wood Dale, IL 60191

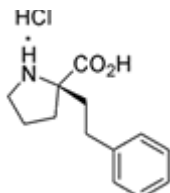
Fax: (630) 766-2218

Web site: www.chemimpex.com

Manufacturing site:

825 Dillon Drive

Wood Dale, IL 60191



Product Specifications

Catalogue Number	15763
Product	(R)-α-Phenethylproline•HCl
CAS Number	1217684-31-5
Molecular Formula	C ₁₃ H ₁₇ NO ₂ •HCl
Molecular Weight	255.74

Appearance	White solid
TLC System	Chloroform/Methanol/Acetic acid (90:8:2) Single spot Chloroform/Methanol/Benzene/Water (8:8:8:1) Single spot Visualized with : UV/Iodine
Optical Rotation	[α] _D ²⁵ = + 36 \pm 2 °C (C=1 in Water)
Purity by TLC	Single spot
Storage	Store at 0 - 8 °C

For Laboratory Use Only