

Chem-Impex International, Inc.

Tel: (630) 766-2112

E-mail: sales@chemimpex.com

Shipping and Correspondence:

935 Dillon Drive

Wood Dale, IL 60191

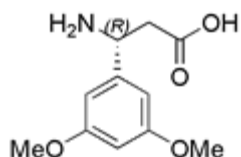
Fax: (630) 766-2218

Web site: www.chemimpex.com

Manufacturing site:

825 Dillon Drive

Wood Dale, IL 60191



Product Specifications

Catalogue Number	15686
Product	(R)-3-Amino-3-(3,5-dimethoxyphenyl)propionic acid D-β-Phe(3,5-dimethoxy)-OH (R)-3,5-Dimethoxy-β-phenylalanine
CAS Number	744193-65-5
Molecular Formula	C ₁₁ H ₁₅ NO ₄
Molecular Weight	225.24
Appearance	White powder
Melting Point	199-203 °C
TLC System	Chloroform/Methanol/Acetic acid (90:8:2) Single spot Chloroform/Methanol/Benzene/Water (8:8:8:1) Single spot Visualized with UV/Iodine
Optical Rotation	[α] _D ²⁵ = -17 ± 2° (C=1 in 0.5 NaOH)
Analysis by Mass Spectra	Conforms to standard
¹H NMR	Conforms to structure
Purity by HPLC	≥ 99%
Purity by TLC	Single spot
Storage	Store at 0-8 °C

For Laboratory Use Only