

Chem-Impex International, Inc.

Tel: (630) 766-2112

E-mail: sales@chemimpex.com

Shipping and Correspondence:

935 Dillon Drive

Wood Dale, IL 60191

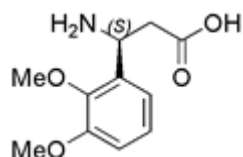
Fax: (630) 766-2218

Web site: www.chemimpex.com

Manufacturing site:

825 Dillon Drive

Wood Dale, IL 60191



Product Specifications

Catalogue Number	15675
Product	(S)-3-Amino-3-(2,3-dimethoxyphenyl)propionic acid L-β-Phe(2,3-dimethoxy)-OH (S)-2,3-Dimethoxy-β-phenylalanine
CAS Number	752198-18-8
Molecular Formula	C ₁₁ H ₁₅ NO ₄
Molecular Weight	225.24
Appearance	Yellow powder
Melting Point	197-201 °C (dec.)
Optical Rotation	[α] _D ²⁵ = -4 ± 1° (C=1 in 0.5N NaOH)
Purity by HPLC	≥ 98%
Storage	Store at 0-8 °C

For Laboratory Use Only