

Chem-Impex International, Inc.

Tel: (630) 766-2112

E-mail: sales@chemimpex.com

Shipping and Correspondence:

935 Dillon Drive

Wood Dale, IL 60191

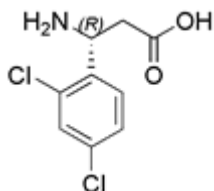
Fax: (630) 766-2218

Web site: www.chemimpex.com

Manufacturing site:

825 Dillon Drive

Wood Dale, IL 60191



Product Specifications

Catalogue Number	15662
Product	(R)-3-Amino-3-(2,4-dichlorophenyl)propionic D-β-Phe(2,4-DiCl)-OH (R)-2,4-Dichloro-β-phenylalanine
CAS Number	778571-53-2
Molecular Formula	C ₉ H ₉ Cl ₂ NO ₂
Molecular Weight	234.08

Appearance	White to off-white powder
¹ H NMR	Conforms to structure
Chiral HPLC	≥ 99% (ee)
Other Enantiomer	≤ 1%
Purity by HPLC	≥ 98%
Storage	Store at 0 - 8 °C

For Laboratory Use Only