

Chem-Impex International, Inc.

Tel: (630) 766-2112

E-mail: sales@chemimpex.com

Shipping and Correspondence:

935 Dillon Drive

Wood Dale, IL 60191

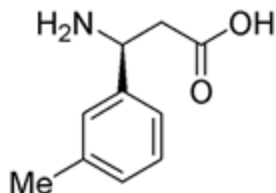
Fax: (630) 766-2218

Web site: www.chemimpex.com

Manufacturing site:

825 Dillon Drive

Wood Dale, IL 60191



Product Specifications

Catalogue Number	15624
Product	(S)-3-Amino-3-(3-methylphenyl)propionic acid
	L-β-Phe(3-Me)-OH
	(S)-3-Methyl-β-phenylalanine
CAS Number	701907-44-0
Molecular Formula	C ₁₀ H ₁₃ NO ₂
Molecular Weight	179.22
Appearance	White powder
Melting Point	204-208 °C (dec.)
TLC System	Chloroform/Methanol/Acetic acid (90:8:2) Single spot Chloroform/Methanol/Benzene/Water (8:8:8:1) Single spot Visualized with UV/Iodine
Optical Rotation	[α] _D ²⁵ = +15 ± 2° (C=1 in 0.5N NaOH)
Purity by HPLC	≥ 98%
Chiral Purity	≥ 99% (ee)
Storage	Store at 0-8 °C

For Laboratory Use Only