

Chem-Impex International, Inc.

Tel: (630) 766-2112

E-mail: sales@chemimpex.com

Shipping and Correspondence:

935 Dillon Drive

Wood Dale, IL 60191

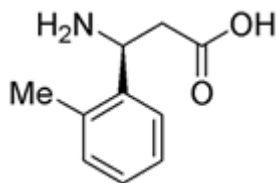
Fax: (630) 766-2218

Web site: www.chemimpex.com

Manufacturing site:

825 Dillon Drive

Wood Dale, IL 60191



Product Specifications

Catalogue Number	15618
Product	(S)-3-Amino-3-(2-methylphenyl)propionic acid
	L-β-Phe(2-Me)-OH
	(S)-2-Methyl-β-phenylalanine
CAS Number	736131-48-9
Molecular Formula	C ₁₀ H ₁₃ NO ₂
Molecular Weight	179.22
Appearance	White to off-white powder
Optical Rotation	[α] _D ²⁵ = -13 ± 2° (C=1 in 0.5 N NaOH)
¹³C NMR	Conforms to structure
¹H NMR	Conforms to structure
Purity by HPLC	≥ 98%
Storage	Store at 0-8°C

For Laboratory Use Only