

Chem-Impex International, Inc.

Tel: (630) 766-2112

E-mail: sales@chemimpex.com

Shipping and Correspondence:

935 Dillon Drive

Wood Dale, IL 60191

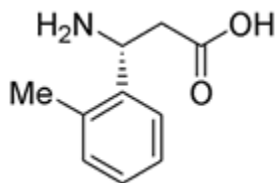
Fax: (630) 766-2218

Web site: www.chemimpex.com

Manufacturing site:

825 Dillon Drive

Wood Dale, IL 60191



Product Specifications

Catalogue Number	15617
Product	(R)-3-Amino-3-(2-methylphenyl)propionic acid
	D-β-Phe(2-Me)-OH
	(R)-2-Methyl-β-phenylalanine
CAS Number	752198-38-2
Molecular Formula	C ₁₀ H ₁₃ NO ₂
Molecular Weight	179.22
Appearance	White powder
TLC System	CHCl ₃ /CH ₃ OH/CH ₃ COOH (90:8:2) Single spot CHCl ₃ /CH ₃ OH/C ₆ H ₆ /H ₂ O (8:8:8:1) Single spot Visualized with UV/Iodine
Optical Rotation	[α] _D ²⁵ = +15 ± 2° (C=1 in 0.5N NaOH)
Purity	≥ 98%
Storage	Store at 0-8 °C

For Laboratory Use Only