

# Chem-Impex International, Inc.

---

**Tel:** (630) 766-2112

**E-mail:** sales@chemimpex.com

**Shipping and Correspondence:**

935 Dillon Drive

Wood Dale, IL 60191

**Fax:** (630) 766-2218

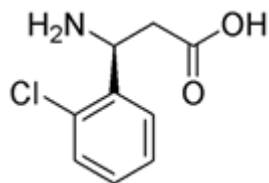
**Web site:** www.chemimpex.com

**Manufacturing site:**

825 Dillon Drive

Wood Dale, IL 60191

---



## Product Specifications

<b>Catalogue Number</b>	15550
<b>Product</b>	<b>(S)-3-Amino-3-(2-chlorophenyl)propionic acid</b>
	L-β-Phe(2-Cl)-OH
	(S)-2-Chloro-β-phenylalanine
<b>CAS Number</b>	763922-37-8
<b>Molecular Formula</b>	C <sub>9</sub> H <sub>10</sub> ClNO <sub>2</sub>
<b>Molecular Weight</b>	199.64
<b>Appearance</b>	White powder
<b>Optical Rotation</b>	[α] <sub>D</sub> <sup>25</sup> = +26 ± 2° (C=1 in 0.5 N NaOH)
<b><sup>13</sup>C NMR</b>	Conforms to structure
<b><sup>1</sup>H NMR</b>	Conforms to structure
<b>Purity by HPLC</b>	≥ 99%
<b>Storage</b>	Store at 0-8°C

---

**For Laboratory Use Only**