

Chem-Impex International, Inc.

Tel: (630) 766-2112

E-mail: sales@chemimpex.com

Shipping and Correspondence:

935 Dillon Drive

Wood Dale, IL 60191

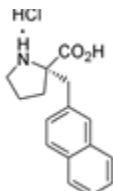
Fax: (630) 766-2218

Web site: www.chemimpex.com

Manufacturing site:

825 Dillon Drive

Wood Dale, IL 60191



Product Specifications

Catalogue Number	15471
Product	(S)-α-(2-Naphthalenylmethyl)proline•HCl
CAS Number	679796-43-1
Molecular Formula	C ₁₆ H ₁₇ NO ₂ •HCl
Molecular Weight	291.78
<hr/>	
Appearance	White powder
Melting Point	282-286 °C (dec.)
TLC System	n-Butanol/Acetic acid/Water (90:8:2) = Single spot Chloroform/Methanol/Benzene/Water (8:8:8:1) = Single spot Visualized with Ninhydrin Spray
Purity by TLC	≥ 99%
Storage	Store at 0-8 °C

For Laboratory Use Only