

Chem-Impex International, Inc.

Tel: (630) 766-2112

E-mail: sales@chemimpex.com

Shipping and Correspondence:

935 Dillon Drive

Wood Dale, IL 60191

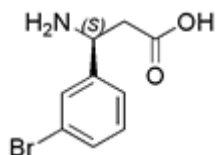
Fax: (630) 766-2218

Web site: www.chemimpex.com

Manufacturing site:

825 Dillon Drive

Wood Dale, IL 60191



Product Specifications

| | |
|--------------------------|---|
| Catalogue Number | 15429 |
| Product | (S)-3-Amino-3-(3-bromophenyl)propionic acid L-β-Phe(3-Br)-OH (S)-3-Bromo-β-phenylalanine |
| CAS Number | 275826-35-2 |
| Molecular Formula | C ₉ H ₁₀ BrNO ₂ |
| Molecular Weight | 244.09 |

| | |
|---------------------------|---|
| Appearance | White solid |
| Optical Rotation | [α] _D ²⁵ = -4.3 ± 2 ° (C=0.5 in 0.1 N NaOH in MeOH) |
| ¹³C NMR | Conforms to structure |
| ¹H NMR | Conforms to structure |
| Other Enantiomer | ≤ 2% |
| Purity | ≥ 98% |
| Chiral Purity | ≥ 98% (ee) |
| Storage | Store at 0 - 8 °C |

For Laboratory Use Only