

Chem-Impex International, Inc.

Tel: (630) 766-2112

E-mail: sales@chemimpex.com

Shipping and Correspondence:

935 Dillon Drive

Wood Dale, IL 60191

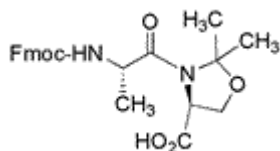
Fax: (630) 766-2218

Web site: www.chemimpex.com

Manufacturing site:

825 Dillon Drive

Wood Dale, IL 60191



Product Specifications

Catalogue Number	15083
Product	Fmoc-Ala-Ser[Psi^(Me,Me)Pro]-OH Fmoc-Ala-Ser($\psi^{\text{Me,Me}}$ pro)-OH (S)-3-[N-(9-Fluorenylmethyloxycarbonyl)-L-alaninyl]-2,2-
CAS Number	252554-78-2
Molecular Formula	C ₂₄ H ₂₆ N ₂ O ₆
Molecular Weight	438.48

Appearance	White powder
Assay by titration	97 - 100%
Other Enantiomer	D-Ala : \leq 0.2% D-Ser : \leq 0.2%
Purity by HPLC	\geq 99%
Storage	Store at 0 - 8 °C

For Laboratory Use Only