

# Chem-Impex International, Inc.

---

Tel: (630) 766-2112

E-mail: sales@chemimpex.com

Shipping and Correspondence:

935 Dillon Drive

Wood Dale, IL 60191

Fax: (630) 766-2218

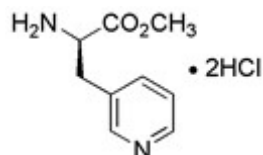
Web site: www.chemimpex.com

Manufacturing site:

825 Dillon Drive

Wood Dale, IL 60191

---



## Product Specifications

Catalogue Number	14922
Product	<b>3-(3-Pyridyl)-D-alanine methyl ester dihydrochloride</b>
	$\beta$ -(3-Pyridyl)-D-Ala-OMe•2HCl
CAS Number	197088-84-9
Molecular Formula	C <sub>9</sub> H <sub>12</sub> N <sub>2</sub> O <sub>2</sub> •2HCl
Molecular Weight	253.13
Warnings	<i>Hygroscopic!</i>
Appearance	White powder
Assay	≥ 97%
Storage	Store at 0 - 8 °C

---

**For Laboratory Use Only**