

Chem-Impex International, Inc.

Tel: (630) 766-2112

E-mail: sales@chemimpex.com

Shipping and Correspondence:

935 Dillon Drive

Wood Dale, IL 60191

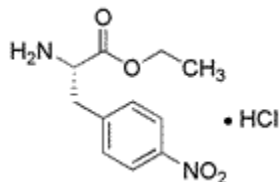
Fax: (630) 766-2218

Web site: www.chemimpex.com

Manufacturing site:

825 Dillon Drive

Wood Dale, IL 60191



Product Specifications

Catalogue Number	14867
Product	4-Nitro-L-phenylalanine ethylester hydrochloride 4-Nitro-L-Phe-OEt•HCl <i>p</i> -Nitro-L-phenylalanine ethylester hydrochloride
CAS Number	58816-66-3
Molecular Formula	C ₁₁ H ₁₄ N ₂ O ₄ •HCl
Molecular Weight	274.7
Appearance	Light yellow powder
Solubility	0.3 gram in 2 ml DMF clear solution
Melting Point	198-204 °C
Water Content (Karl Fisher)	≤ 0.5%
Optical Rotation	[α] _D ²⁰ = +35 ± 2° (C=2 in DMF)
Infrared Spectrum	Conforms to structure
Analysis by Mass Spectra	Conforms to standard
Loss on Drying	≤ 0.5% (70 °C, 2h)
¹H NMR	Conforms to structure
Purity by HPLC	≥ 99%
Storage	Store at 0-8 °C

For Laboratory Use Only