

Chem-Impex International, Inc.

Tel: (630) 766-2112

E-mail: sales@chemimpex.com

Shipping and Correspondence:

935 Dillon Drive

Wood Dale, IL 60191

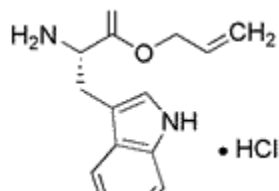
Fax: (630) 766-2218

Web site: www.chemimpex.com

Manufacturing site:

825 Dillon Drive

Wood Dale, IL 60191



Product Specifications

Catalogue Number	14445
Product	L-Tryptophan allyl ester hydrochloride
	L-Trp-OAll•HCl
CAS Number	204063-20-7
Molecular Formula	C ₁₄ H ₁₆ N ₂ O ₂ •HCl
Molecular Weight	280.79
<hr/>	
Appearance	White powder
Melting Point	209-215 °C
Optical Rotation	[α] _D ²⁰ = +8 ± 2° (C=1 in H ₂ O)
Analysis by Mass Spectra	[M+H] ⁺ = 245 ± 1
Purity by HPLC	≥ 98%
Storage	Store at 0-8°C

For Laboratory Use Only