

Chem-Impex International, Inc.

Tel: (630) 766-2112

E-mail: sales@chemimpex.com

Shipping and Correspondence:

935 Dillon Drive

Wood Dale, IL 60191

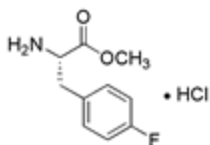
Fax: (630) 766-2218

Web site: www.chemimpex.com

Manufacturing site:

825 Dillon Drive

Wood Dale, IL 60191



Product Specifications

Catalogue Number	14378
Product	4-Fluoro-L-phenylalanine methyl ester hydrochloride L-Phe(4-F)-OMe•HCl <i>p</i> -Fluoro-L-Phe-OMe•HCl
CAS Number	64231-55-6
Molecular Formula	C ₁₀ H ₁₂ FNO ₂ •HCl
Molecular Weight	233.7
Melting Point	198 - 200 °C
Optical Rotation	[α] ²⁰ _D = 16 ± 1 ° (C=1 in MeOH)
Purity by HPLC	≥ 99%
Storage	Store at 0 - 8 °C

For Laboratory Use Only