

Chem-Impex International, Inc.

Tel: (630) 766-2112

E-mail: sales@chemimpex.com

Shipping and Correspondence:

935 Dillon Drive

Wood Dale, IL 60191

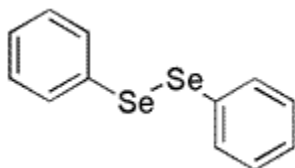
Fax: (630) 766-2218

Web site: www.chemimpex.com

Manufacturing site:

825 Dillon Drive

Wood Dale, IL 60191



Product Specifications

Catalogue Number	14373
Product	Diphenyl diselenide
	Phenyl diselenide
CAS Number	1666-13-3
Molecular Formula	C ₁₂ H ₁₀ Se ₂
Molecular Weight	312.13
<hr/>	
Appearance	Yellow crystalline powder
Solubility	Clear solution (5% in Dichloromethane)
Melting Point	58 - 64 °C
Loss on Drying	≤ 0.5%
Purity by GC	≥ 99%
Storage	Store at 0 - 8 °C

For Laboratory Use Only