

Chem-Impex International, Inc.

Tel: (630) 766-2112

E-mail: sales@chemimpex.com

Shipping and Correspondence:

935 Dillon Drive

Wood Dale, IL 60191

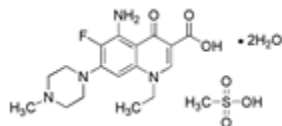
Fax: (630) 766-2218

Web site: www.chemimpex.com

Manufacturing site:

825 Dillon Drive

Wood Dale, IL 60191



Product Specifications

Catalogue Number	14350
Product	Pefloxacin Pefloxacin methanesulfonate 1-Ethyl-6-fluoro-7-(4-methylpiperazin-1-yl)-4-oxo-quinoline-3-carboxylic acid
CAS Number	149676-40-4
Molecular Formula	C ₁₇ H ₂₀ FN ₃ O ₃ •CH ₄ O ₃ S•2H ₂ O

Appearance	White or pale yellow crystalline powder
Clarity & Color	Clarity : Clear solution Color : ≤ 7
Solubility	Freely soluble in water, slightly soluble in ethanol and practically insoluble in chloroform.
Heavy Metals	≤ 20 ppm
Anion	Fluorine : ≥ 4%
pH	3.5 - 4.5
Loss on Drying	≤ 8.5%
Related Substances	Conforms
Residue On Ignition	≤ 0.1%
Assay	≥ 99%
Storage	Store at ≤ -4 °C

For Laboratory Use Only