

Chem-Impex International, Inc.

Tel: (630) 766-2112

E-mail: sales@chemimpex.com

Shipping and Correspondence:

935 Dillon Drive

Wood Dale, IL 60191

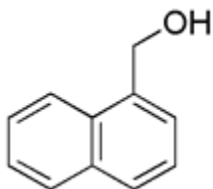
Fax: (630) 766-2218

Web site: www.chemimpex.com

Manufacturing site:

825 Dillon Drive

Wood Dale, IL 60191



Product Specifications

Catalogue Number	14334
Product	1-Naphthalenemethanol
	1-(Hydroxymethyl)naphthalene
CAS Number	4780-79-4
Molecular Formula	C ₁₀ H ₇ CH ₂ OH
Molecular Weight	158.2

Appearance	White to off-white solid
Melting Point	58-65 °C
Purity	≥ 99% (NMR)
Storage	Store at 0-8°C

For Laboratory Use Only